



XHRL series

XHRL 12410W



Valve Regulated Lead Acid Battery

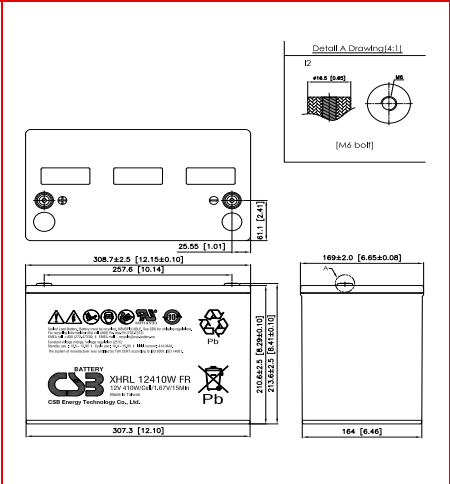
Maintenance-Free Sealed Lead Acid Battery.
Absorbent Glass Mat (AGM) technology for efficient gas recombination of up to 99%.

General Design for Standby Power Applications

<p>【Design Life】 Up to 10 Years in Standby Service at 25°C Eurobat (20°C) : >12 YEARS VERY LONG LIFE</p> <p>【Operating Temperature Range】 Nominal Operating Temperature : 25°C (77°F) Discharge : -15°C ~ 50°C (5°F~122°F) Charge : -15°C ~ 40°C (5°F~104°F) Storage : -15°C ~ 40°C (5°F~104°F)</p>	<p>【Float Charging Voltage】 13.5 ~ 13.8 VDC/Unit at 25°C (77°F)</p> <p>【Equalization Charging Voltage】 14.4 ~ 15.0 VDC/Unit at 25°C (77°F)</p> <p>【Self Discharge】 Less than 10% after 90 days, can be stored up to 6 months at 25°C (77°F); Fully recharging is required before usage, and charged sooner if stored at higher temperature than 25°C (77°F).</p>
--	---

Specification Design according with IEC 60896-21/22:2004

Nominal Voltage	12V (6 cells per unit)		
Nominal Capacity	410W @15min-rate to 1.67V per cell @25°C (77°F)		
Weight	Approx. 32.60 Kg (71.85 lbs)		
Maximum Discharge Current	800A (5sec)		
Internal Resistance	Approx. 2.90 mΩ		
Short Circuit Current	3171A		
Maximum Charge Current	41A		
Terminal types	I2 thread lead alloy terminal to accept M6 bolt		
Terminal tightening torque	51.7±10.3 Kgf·cm / 44.9±9.0 Lbf·in / 5.1±1.0 N·m		
Container Material	PP (UL 94-HB) & Flame Retardant (94-V0) available upon request		
Dimensions	Length (L)	308.7±2.5 mm	12.15±0.10 inch
	Width (W)	169.0±2.0 mm	6.65±0.08 inch
	Container Height (h)	210.6±2.5 mm	8.29±0.10 inch
	Overall Height (H)	213.6±2.5 mm	8.41±0.10 inch



Constant Current Discharge Characteristics Unit: A (25°C, 77°F)

F.V/Time	2MIN	4MIN	5MIN	6MIN	8MIN	10MIN	15MIN	20MIN	30MIN	45MIN	60MIN	90MIN
1.60V	615	512	469	431	369	319	238	189	136	97.1	76.4	54.6
1.67V	552	463	427	399	341	302	229	183	133	95.7	75.6	54.2
1.70V	522	439	409	378	328	291	223	179	132	94.8	75.0	54.0
1.75V	469	402	370	343	304	269	212	171	128	92.5	73.6	53.3
1.80V	402	349	326	309	272	242	195	160	121	88.3	70.8	51.9
1.85V	311	300	283	263	233	213	171	142	110	81.6	65.9	48.8

Constant Power Discharge Characteristics Unit: W (25°C, 77°F)

F.V/Time	2MIN	4MIN	5MIN	6MIN	8MIN	10MIN	15MIN	20MIN	30MIN	45MIN	60MIN	90MIN
1.60V	6081	5070	4746	4341	3771	3322	2571	2112	1600	1136	890	632
1.67V	5600	4794	4379	4058	3599	3166	2504	2068	1580	1124	883	628
1.70V	5337	4580	4205	3922	3480	3078	2462	2040	1565	1116	878	626
1.75V	4887	4179	3899	3684	3242	2901	2362	1972	1529	1095	865	620
1.80V	4307	3763	3603	3348	2958	2687	2207	1863	1468	1058	839	605
1.85V	3660	3284	3059	2887	2635	2454	2002	1711	1372	993	790	572

Please refer to the official site for the latest rating confirmation. URL: www.csb-battery.com

Issued: 200930

Sales Offices

希世比能源科技股份有限公司
CSB Energy Technology Co., Ltd.

BUSINESS HEADQUARTERS

Tel: +886-2-2880-5600
Fax: +886-2-2888-3300

USA OFFICE

Tel: +1-817-244-7777 / 1-(800)3-CSB-USA (272872)
Fax: +1-817-244-4445

SHENZHEN OFFICE (CHINA)

Tel: +86-755-8831-6488/6775/6075
Fax: +86-755-8831-6548

EUROPE (EMEA) OFFICE

Tel: +31(0)180-418-140
Fax: +31(0)180-418-327

SHANGHAI OFFICE (CHINA)

Tel: +86-21-5046-1622/0833/0094
Fax: +86-21-5046-1046

Recognized under UL 1989,
and certified by ISO 9001, 14001, 45001, 50001.



TAIPEI OFFICE

Tel: +886-2-2880-5600
Fax: +886-2-2888-3300

BEIJING OFFICE (CHINA)

Tel: +86-10-6597-8065/8165/8265
Fax: +86-10-6597-8565